

CAUTION: Programming via USB port is possible in Windows XP/Vista/7/8/10. Drivers must be installed beforehand.

A. USB drivers installation

- 1 Insert the supplied CD into your computer drive. If you do not have the CD, you can download the software as well as the drivers from our website: <http://www.apar.pl/en/download/software>



- 2 Connect the recorder to a computer using the supplied USB cable.

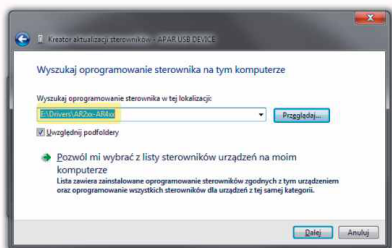
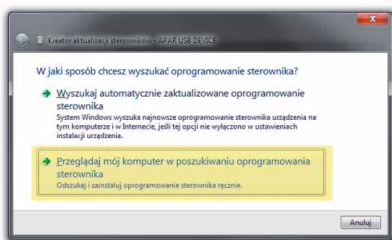


- 3 Windows will detect new devices - storage and virtual COM port and start installing the drivers.



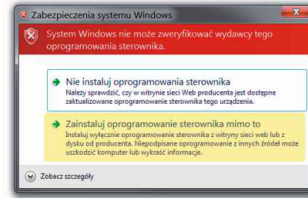
Storage will be installed automatically, but when you install COM port on a other than Windows 10 system, you will need to **manually** indicate the location of the drivers on the CD:

"/DRIVERS/AR2xx-AR4xx" or the ARsoft default data folder:
 -.,C:\Program Files (x86)\ARsoft\CFG\Drivers" for 64-bit systems
 -.,C:\Program Files\ARsoft\CFG\Drivers" for 32-bit systems



CAUTION: Selecting automatic installation of the COM port drives may cause lack of communication with the device!

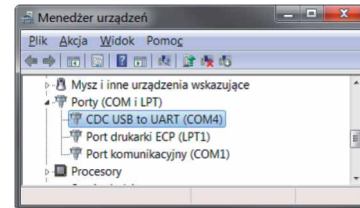
- 4 If you see a message that the driver supplier cannot be verified, please select "Install this driver anyway".



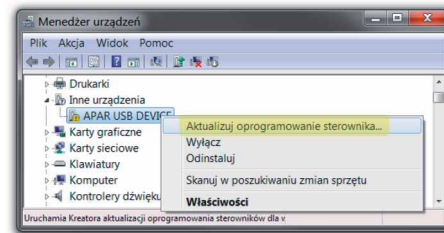
In case of in Windows 8/10 systems, it is necessary to either install ARsoft-CFG or disable driver signature verification.

- 5 If the drivers have been installed correctly in the Windows Device Manager, another item will appear under the COM and LPT ports branch: CDC USB to UART (COMx)

where x is the number of the assigned virtual COM port



In case of incorrect installation, please find the APAR USB DEVICE marked with an exclamation point in the Device Manager and update the drivers.



B. ARSoft-WZ1 Installation and configuration

- 6 ARSoft-CFG-WZ1 is used for online viewing of measurements and for setting device parameters. The program installer also includes Windows drivers and installs a system certificate for the drivers. The ARSoft-CFG-WZ1 Installation Program can be found on the CD in the "Software", folder and the latest version of the program can be downloaded from our website:

„<http://www.apar.pl/en/download/software>”

Start the installation program and follow the instructions displayed on screen.

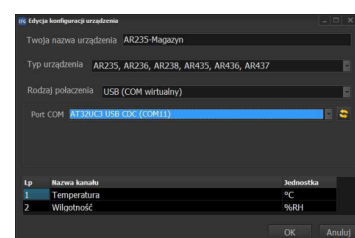
AR231, AR232, AR235, AR236

→manual section 6

AR233, AR234

→manual section 8

- 7 Start ARsoft-CFG-WZ1 and in the "Add configuration" window , enter a unique name for your device, select the type of device to be connected and set the COM port number assigned to the driver during installation (point 5).



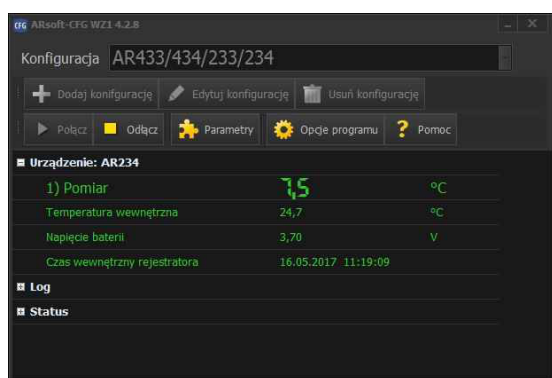
B. Starting recording

- 8** Set the start and end time of the recording (Start / Stop parameters) and check if the internal clock of the device is set correctly:
AR231, AR232, AR235, AR236
→ manual section 7, table 1
AR233, AR234
→ manual sections 9.1, 9.2 and 9.3.

Configuration must be carried out with ARSoft-CFG-WZ1.
When configuration is complete, the device will start recording **at the scheduled time** set in the recording options.

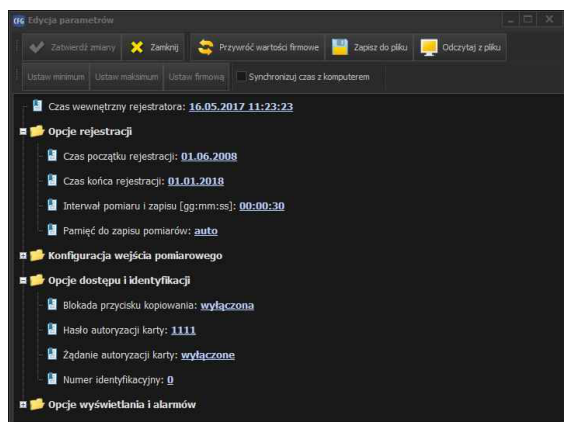
CAUTION: The device does not record data when the recorder is connected to a computer via USB cable.

- 9** Start the ARSoft-CFG and in the main window, select the desired configuration, click "Connect" and after establishing connection with the device, select "Parameters";



- 10** Set all parameters that need to be changed according to the instruction manual, and **click confirm changes**. After closing the "Edit parameters" window, click "Disconnect". You can begin the configuration of the next device.

CAUTION: In case of simultaneous use of multiple recorders, each of them should be assigned a different ID number.



C. Displaying recorded data

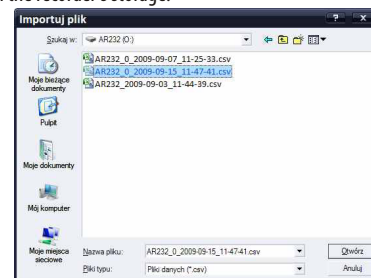
- 12** Odczyt danych jest możliwy bezpośrednio poprzez podgląd plików CSV lub w ARSoft-LOG-WZ3. Program instalacyjny ARSoft-WZ3 znajduje się na płycie CD w katalogu "Software"; a najnowszą wersję programu można pobrać ze strony: "<http://www.apar.pl/download/oprogramowanie.html>". Import plików możliwy jest poprzez USB lub kartę SD.

C.1 Data reading via USB

- 13** Connect the recorder to the computer. A new removable disk will appear in Windows (or 2 if there is an SD card in the device).

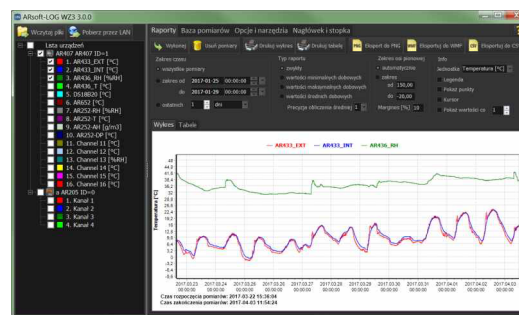


- 14** Start ARSoft-LOG-WZ3, click "Load files" and open one of the CSV archive files from the recorder's storage.



A window will appear in which you can assign names to channels of the recorder. Confirm your selection and the measurements will be loaded into the database.

- 15** In the device list, select the channels for which you wish to generate report. In the "Reports" tab. After clicking "Start" on the "Reports" tab a diagram and a table with data for the selected channel will be generated.



C.2 Reading data via SD card

- 13** Insert the SD card into the recorder. Press COPY button. The STATUS LED lights up during the copying process. When copying is complete, remove the card, connect it to your computer using a card reader, and then follow the instructions laid out in steps 13-15.